

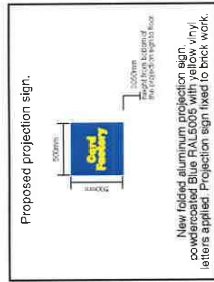


## Window Manifestation Design

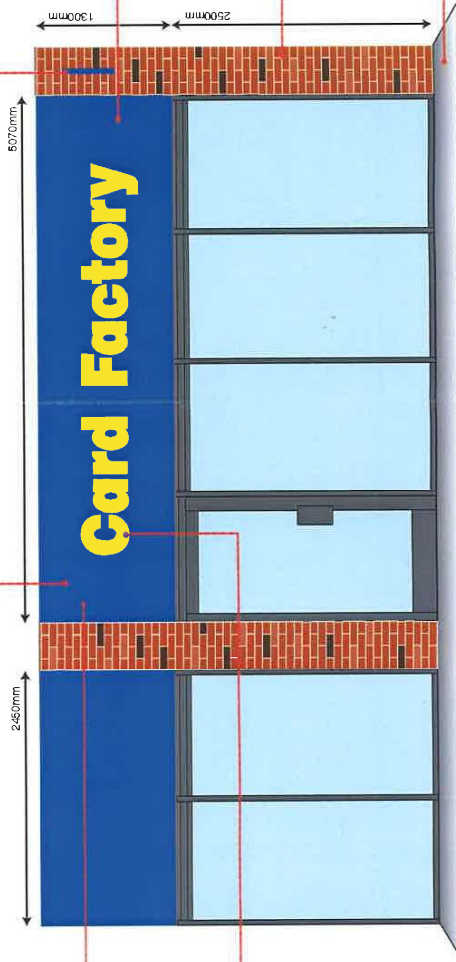
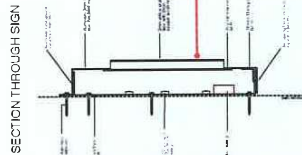
[www.cardfactory.co.uk](http://www.cardfactory.co.uk)

Window manifestations to be applied to all visible glazed panels on internal surfaces. Frosted circle design with frosted Card Factory web address positioned at 1500mm and 850mm from ground level to meet the Partially Frosted Regulations & Standards

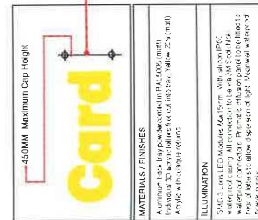
☐ **NOTES** Existing shop front to be cleaned down with sugar soap and general condition reported to Operations H.O.



EXISTING SHOP FRONT AND SIGNAGE

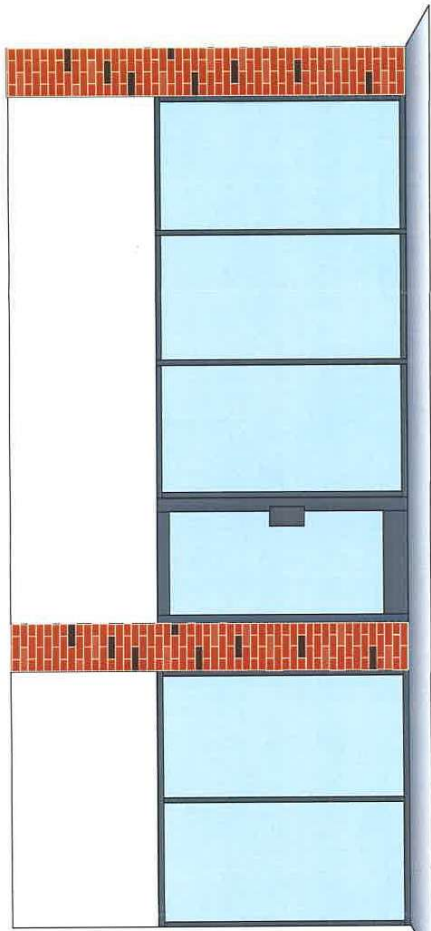


EXISTING SHOP FRONT AND PROPOSED NEW SIGNAGE



SCALE

Due to the method of reproduction these plans may not be exact when using a calibrated scale rule, as a guide use the indicated bar which was shown on the original drawing at 1000mm



□ New folded aluminum projection sign powdercoated Blue RAL5005 with yellow vinyl letters applied. Projection sign fixed to brick work.

New aluminium 'biscuit tin' tray  
powdercoated Blue RAL5005. Internally  
illuminated using LED lighting, illumination  
to show through letters only.

Existing brick columns to remain unchanged

[illegible]

CONTACT		Journal Name
Email	prakash.patel@cs.cmu.edu	Journal of the ACM
Direct Link	0130217702	
Mobile	0774 700 422	

Cam Factory, Century House, Buxton Road,  
Warrington, Cheshire, Warrington, W92 0XG



